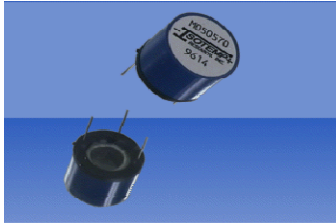


M XX SERIES



The M43 and M05 series crystal ovens are designed to maintain quartz crystals and other critical components at a constant temperature over a wide environmental temperature range. The oven has a proportionally controlled heater circuit with fast warm-up characteristics. In addition to heating crystal, a popular use for this oven is temperature stabilization of accelerometers in TO-5 packages. The use of thermal compound is recommended between the oven cavity and the component for good heat transfer. Both ovens are designed for thru-hole printed circuit board mounting.

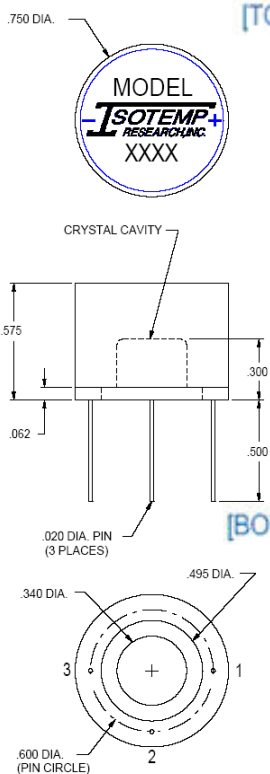
Features:

- 19.1 x 15.9 mm.
- HC-35/U (TO5), HC-43/U
- Fast Warm-up

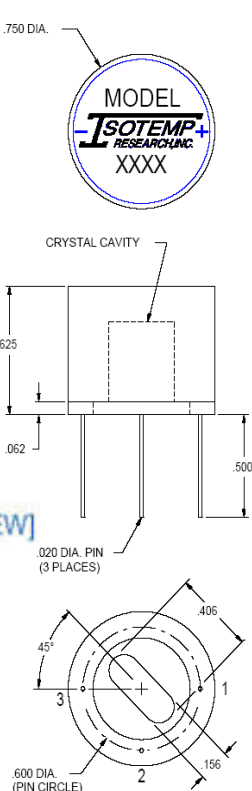
M	Package (mm)	Supply Voltage (V)	Temp. Stability (°C)	Ambient Temp. Range (°C)	Set Temp. Range (°C)	Lead Free
05	14.6 x 19.1 DIA	5	±3.0	-40 ~ -10 Below Set Point	35-95	Not Available
43	15.9 x 19.1 DIA	28		(TT - 10)		

Coding: MXXVVTT : XX = 05 for crystal HC-35/U, TO-5, and TO-39 packages
 XX = 43 for crystal HC-18/U, HC-25/U, HC-42/U, HC-43/U, HC-49/U and HC-50/U packages
 VV = Voltage +5V to +28V
 TT = Temperature +35°C to +95°C

Outline Drawing M05VVTT



M43VVTT



PIN CONNECTIONS	
PIN	FUNCTION
1	+ VDC
2	NO CONNECTION
3	0 VDC

Note:
 1. Crystal Cavity is Connected to 0 VDC
 2. Marking: Label

M XX SERIES

Electrical Specification: M431260

	Min.	Nominal	Max.	Note	Unit
Temperature					
Set point		60			°C
Initial tolerance			∇3	At +25 °C Ambient Temp.	°C
Ambient Temp. Range	-40		50		°C
Stability					
Ambient			∇3		°C
Voltage			∇0.5	∇10% change	°C
Warm-up			±1	In 2 minutes @+25 °C (reference temperature at 15 minutes)	°C
Input Power					
Voltage	10.8	12	13.2		VDC
Power at turn on			6	At +25 °C	W
Power slope v. ambient temp. *		-0.024			W / °C
Steady stage @ 25°C *		0.84			W

* In still air